

Designer Homes by Rex Horst

nine

1,997 sq. ft.

106 Auburn Hill



Rex Horst
Designer Homes by Rex Horst
P.O. Box 7893
Victoria, Texas 77903
(361) 576-6232
hrider@suddenlinkmail.com

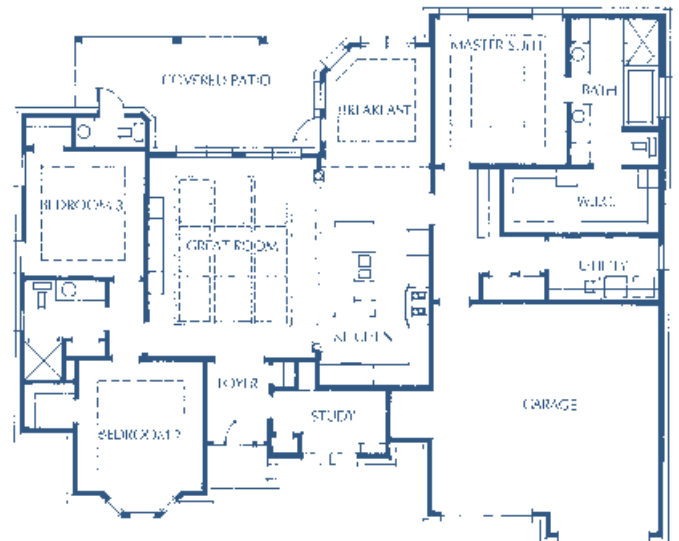
Affordability and Efficiency, these two things have always been important, but they appear to be even more desirable in today's market. We are all concerned about how we can make our money do more and try to strike a balance between price and desire. Our parade entry this year is a smaller home that appeals to both of these needs.

Energy efficiency is a hallmark of Designer Homes. The standard energy package we install in all of our larger homes is also present here, ensuring your dollar goes further in terms of heating, cooling and lighting. Efficient room design means that we do not waste any space inside the home, preventing you from paying for more house than you actually need or can use.

When it comes to affordability, if you look in this home's size range, you normally find a "cookie cutter" style of home. This really does not appeal to most of the home buyers today. Many of today's buyers are either looking to move up from a starter type home to a higher quality structure, or downsize from a larger home to a more manageable size without sacrificing amenities. This home is the perfect size for any family, but maintains the quality and finishing touches normally reserved for a much larger home. Make sure you note the custom cabinetry with premium finish, the molding improving the feel of the home throughout, and the traditional wood flooring. Also, be sure not to miss the signature double-barrel ceiling in the entry as well as the other ceiling embellishments, and more of the little touches that make a big difference.

We would love to have the opportunity to talk to you about the home of your dreams, be sure to visit us at our website: www.designerhomesbyrexhorst.com. We tailor fit all of our homes to your specific needs and use our experience to ensure your home will perform exactly how you like.

Thank you again for visiting with us and we hope to work with you soon!



Designer Homes by Rex Horst

would like to thank the following BAV members for their hard work and support in the construction of this home:

Acme Brick
Alamo Concrete
Budget Blinds
City Plumbing Supply
Custom Interiors
David Flores Trucking
Efficiency Air

Glass Doctor of Six Flags
Hotchkiss Insurance
Joe's Drywall
HP Stone
Kelly's Cabinets
Marrs Lumber
Prosperity Bank

Quality Painting & Remodeling
Sherwin-Williams
VCS Companies
Victoria Blue Print
Victoria Builder Supply